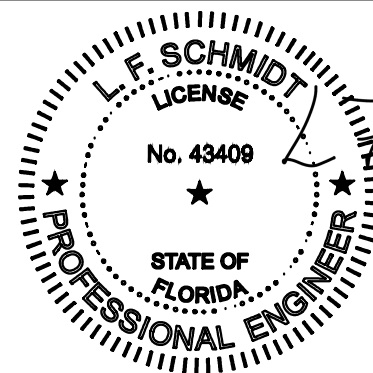
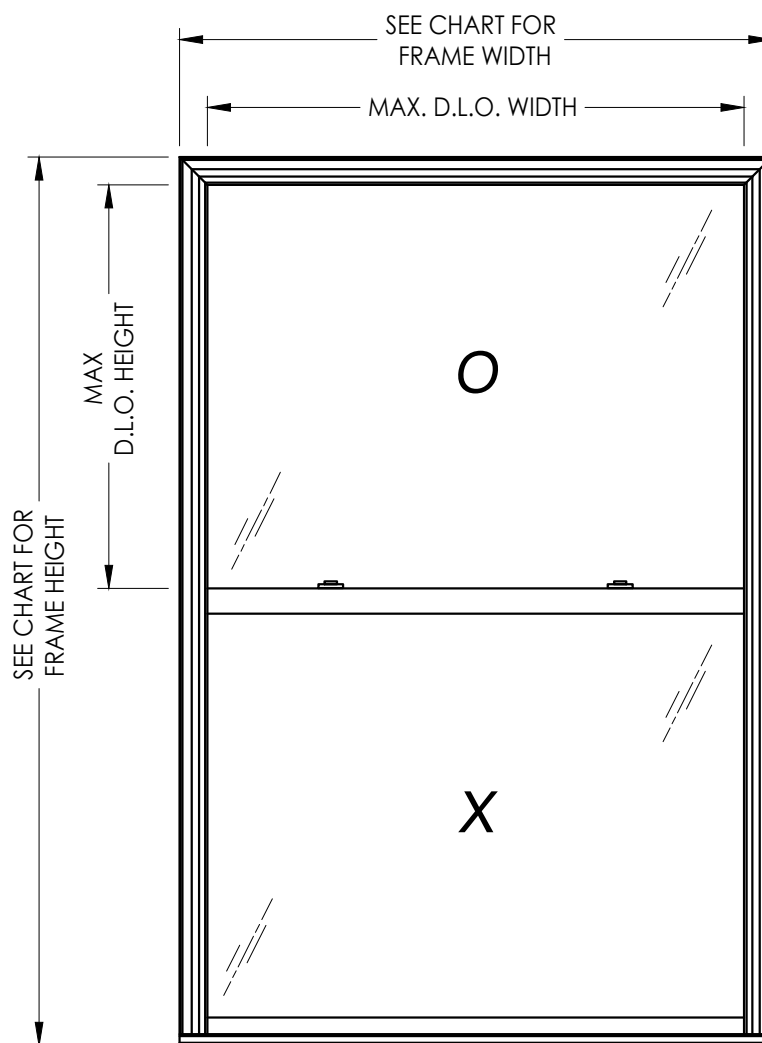




250 Staunton Turnpike, Parkersburg, WV 26104

5400, 5400S Series Vinyl Single Hung Window "NON-IMPACT"



This item has been digitally signed and sealed by L. F. Schmidt, P.E. on the date adjacent to the seal. Printed copies of this document are not considered signed and sealed and the signature must be verified on any electronic copies.

THIS PRODUCT APPROVAL IS VALID ONLY FOR THE STATE OF FLORIDA

Documents Prepared By:
Lyndon F. Schmidt
P.E. No. 43409

Shultz
BUILDING CONSULTANTS, INC.
P.O. Box 230, Vairico, FL 33595
Phone No.: 813.659.9197
FBPE Registry No. 9813

PRODUCT: 5400, 5400S SERIES
Vinyl Single Hung Window
PART OR ASSEMBLY:
TYPICAL ELEVATION, DESIGN PRESSURES & GENERAL NOTES

GENERAL NOTES

- This product has been evaluated and is in compliance with the 8th Edition (2023) Florida Building Code (FBC) structural requirements excluding the "High Velocity Hurricane Zone" (HVHZ).
- Product anchors shall be as listed and spaced as shown on details. Anchor embedment to base material shall be beyond wall dressing or stucco.
- When used in areas requiring wind borne debris protection this product is required to be protected with an impact resistant covering that complies with FBC Sections 1609.1.2 & R301.2.1.2.
- For 2x stud framing construction, anchoring of these units shall be the same as that shown for 2x buck masonry construction.
- Site conditions that deviate from the details of this drawing require further engineering analysis by a licensed engineer or registered architect.

TABLE OF CONTENTS

| SHEET# | DESCRIPTION |
|--------|--|
| 1 | Typical elevations, design pressures and general notes |
| 2 | Horizontal cross sections |
| 3 | Vertical cross sections |
| 4 | Buck and frame anchoring |
| 5 | Buck and frame anchoring |
| 6 | Buck and frame anchoring |
| 7 | Bill of materials, components & glazing details |

| MAX. FRAME DIMENSION | MAX. FIXED D.L.O. DIMENSION | GLASS TYPE | DESIGN PRESSURE (PSF) | |
|----------------------|-----------------------------|------------|-----------------------|----------|
| | | | POSITIVE | NEGATIVE |
| 48.0" X 72.0" | 43.5" X 32.75" | G1 | +50.0 | -55.0 |
| 52.0" X 48.0" | 47.5" X 20.75" | G1 | +35.0 | -45.0 |
| 32.0" X 80.0" | 27.5" X 36.75" | G1 | +35.0 | -40.0 |
| 54.0" X 56.0" | 49.5" X 24.75" | G1 | +30.0 | -35.0 |
| 52.0" X 58.0" | 47.5" X 25.75" | G1 | +30.0 | -35.0 |
| 40.0" X 74.0" | 35.5" X 33.75" | G1 | +30.0 | -35.0 |
| 36.0" X 84.0" | 31.5" X 38.75" | G1 | +30.0 | -35.0 |
| 52.0" X 68.0" | 47.5" X 30.75" | G1 | +25.0 | -30.0 |

| MAX. FRAME DIMENSION | MAX. FIXED D.L.O. DIMENSION | GLASS TYPE | DESIGN PRESSURE (PSF) | |
|----------------------|-----------------------------|------------|-----------------------|----------|
| | | | POSITIVE | NEGATIVE |
| 48.0" X 74.0" | 43.5" X 33.75" | G1 | +25.0 | -30.0 |
| 44.0" X 82.0" | 39.5" X 37.75" | G1 | +25.0 | -30.0 |
| 40.0" X 84.0" | 35.5" X 38.75" | G1 | +25.0 | -30.0 |
| 54.0" X 84.0" | 49.5" X 38.75" | G1 | +20.0 | -25.0 |
| 36.0" X 96.0" | 31.5" X 44.75" | G1 | +30.0 | -30.0 |
| 48.0" X 96.0" | 43.5" X 55" | G1 | +40.0 | -40.0 |
| 48.0" X 96.0" | 43.5" X 44.75" | G2 | +30.0 | -30.0 |

| NO. | DATE | REVISIONS |
|-----|---------|----------------------------------|
| 7 | 7/06/23 | UPDATE TO 8TH ED. (2023) FBC LFS |
| 6 | 7/02/20 | UPDATE TO 7TH ED. (2020) FBC LFS |
| 5 | 6/01/17 | UPDATE TO 6TH ED. (2017) FBC JK |
| 4 | 6/09/16 | REVISE INSTALLATION SCREWS LFS |
| | | BY |

DATE: 6/22/14

SCALE: N.T.S.

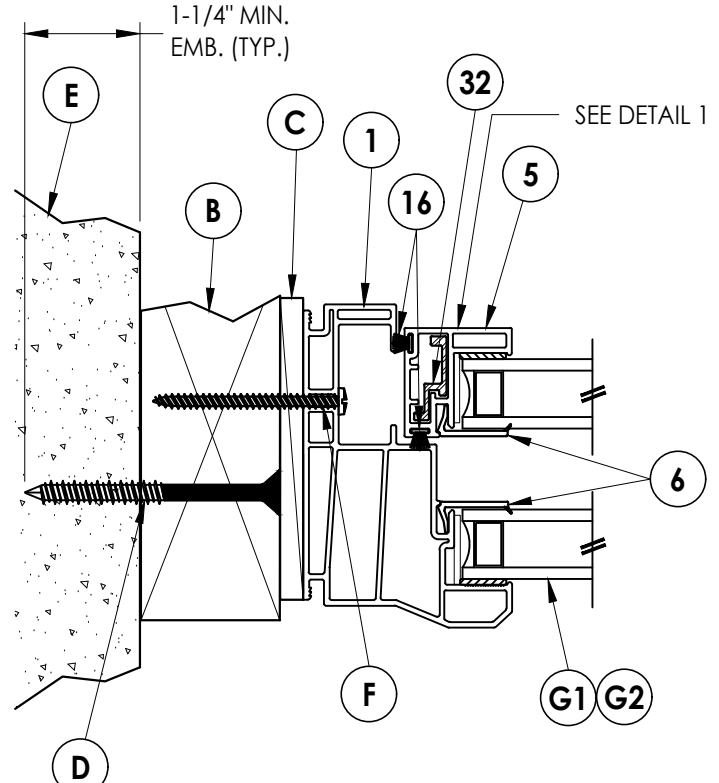
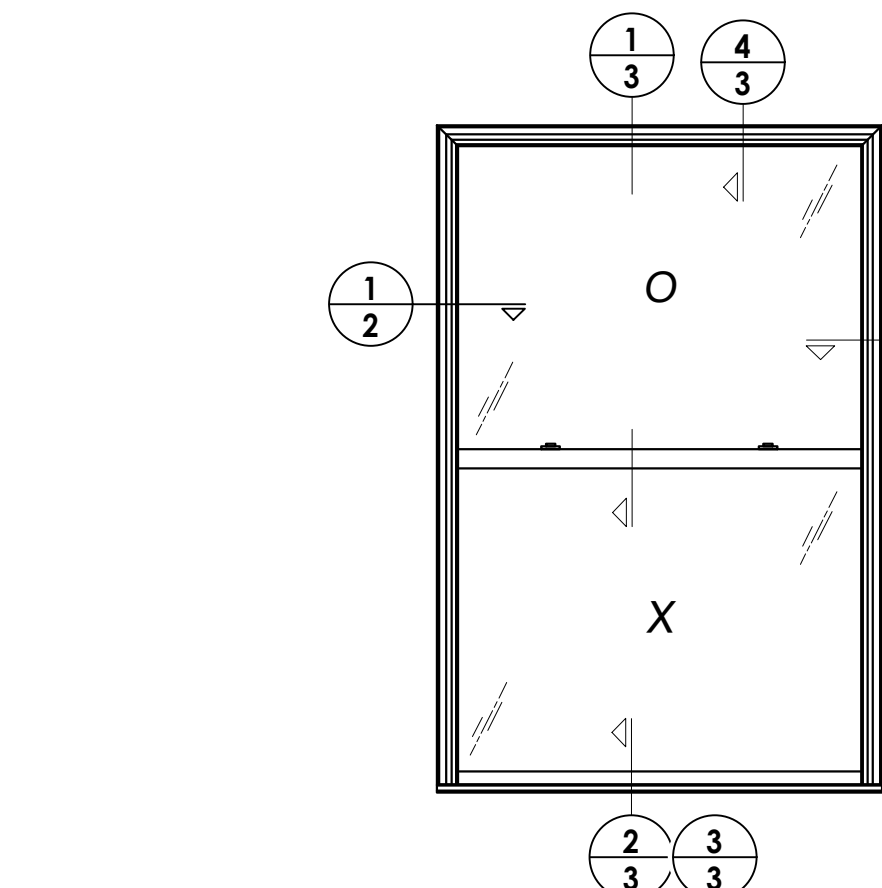
DWG. BY: JK

CHK. BY: LFS

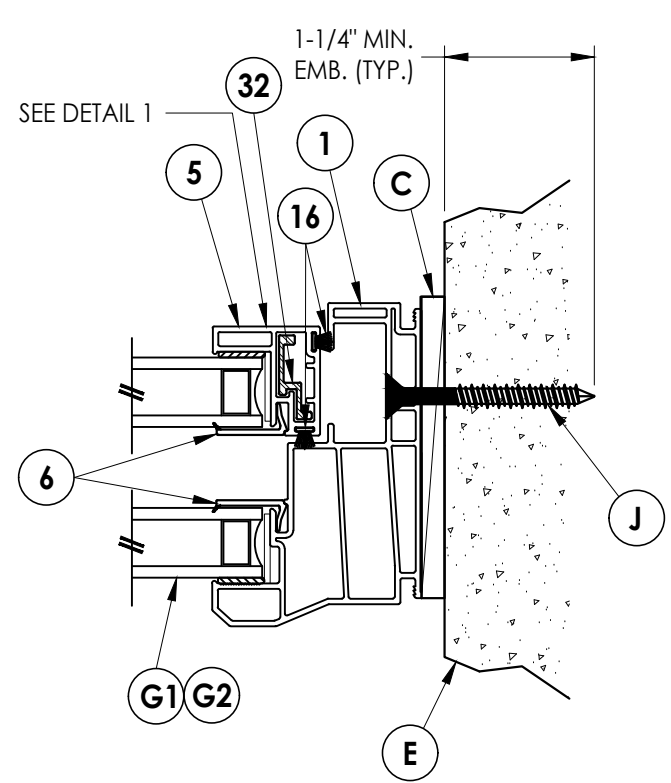
DRAWING NO.:
FL-17088.2

SHEET 1 OF 7

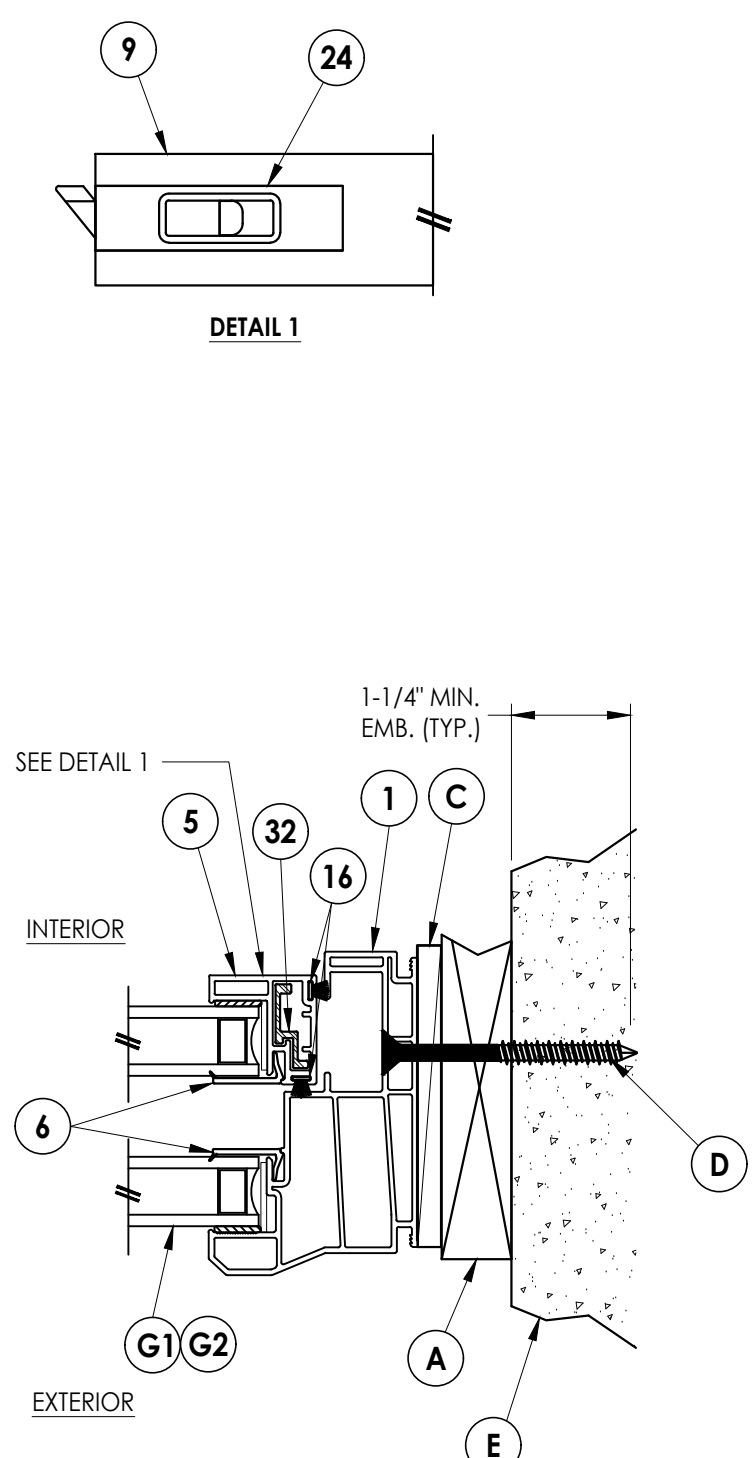
Z:\2023 FBC Drawings\Wincore Window Company\FL-17088 R7\FL-17088.2.dwg



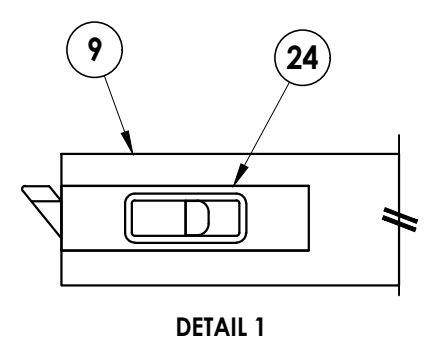
1 HORIZONTAL CROSS SECTION
2 Shown w/ 2X buck



2 HORIZONTAL CROSS SECTION
2 Shown direct to masonry

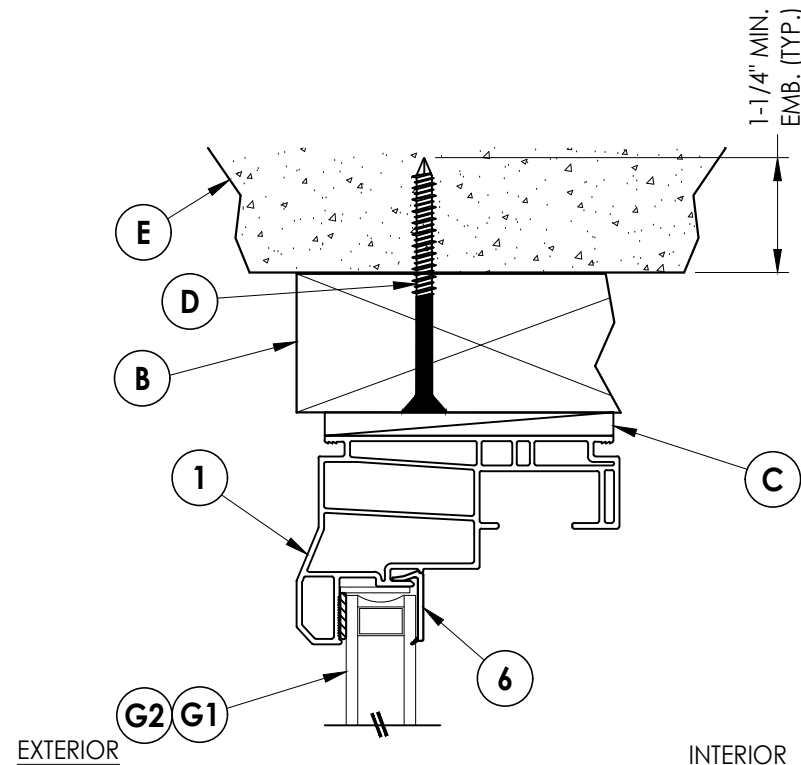


3 HORIZONTAL CROSS SECTION
2 Shown w/ 1X buck

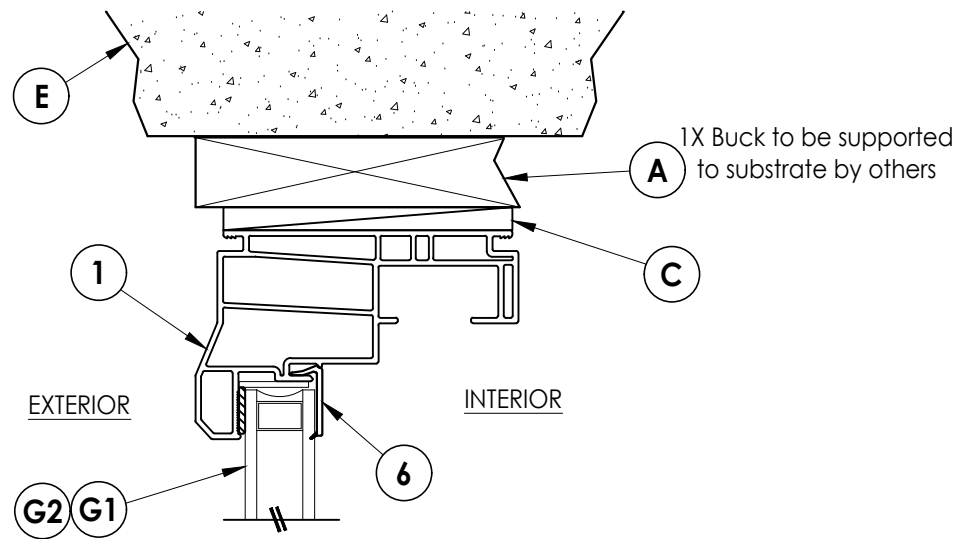
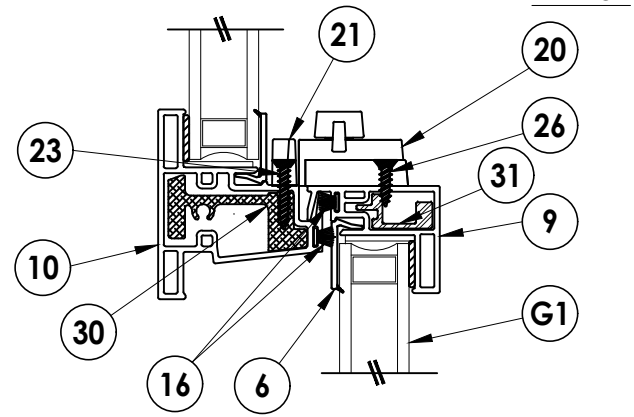


| | | | |
|---|---------|--|---------|
| Documents Prepared By: Lyndon F. Schmidt P.E. No. 43409 | | BUILDING CONSULTANTS, INC. P.O. Box 230, Valrico, FL 33595 Phone No.: 813.659.9197 FBPE Registry No. 9813 | |
| PRODUCT: 5400, 5400S SERIES Vinyl Single Hung Window | | PART OR ASSEMBLY: HORIZONTAL CROSS SECTIONS | |
| NO. | DATE | REVISIONS | BY |
| 7 | 7/06/23 | UPDATE TO 8TH ED. (2023) | FBC LFS |
| 6 | 7/02/20 | UPDATE TO 7TH ED. (2020) | FBC LFS |
| 5 | 6/01/17 | UPDATE TO 6TH ED. (2017) | FBC JK |
| 4 | 6/09/16 | REVISE INSTALLATION SCREWS | LFS |

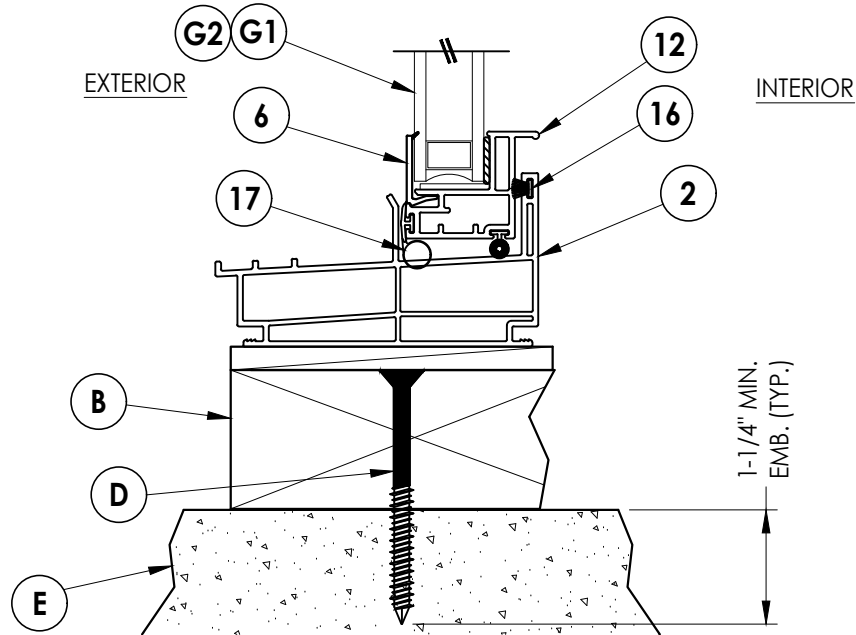
DATE: 6/22/14
 SCALE: N.T.S.
 DWG. BY: JK
 CHK. BY: LFS
 DRAWING NO.: FL-17088.2
 SHEET 2 OF 7



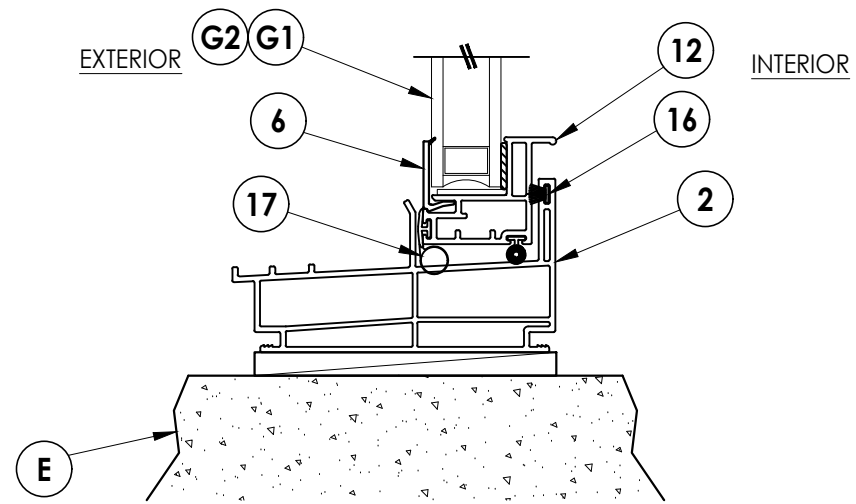
1 VERTICAL CROSS SECTION
3 Shown w/ 2X buck



4 VERTICAL CROSS SECTION
3 Shown w/ 1X buck



2 VERTICAL CROSS SECTION
3 Shown w/ 2X buck



3 VERTICAL CROSS SECTION
3 Shown direct to masonry

Documents Prepared By:
 Lyndon F. Schmidt
 P.E. No. 43409

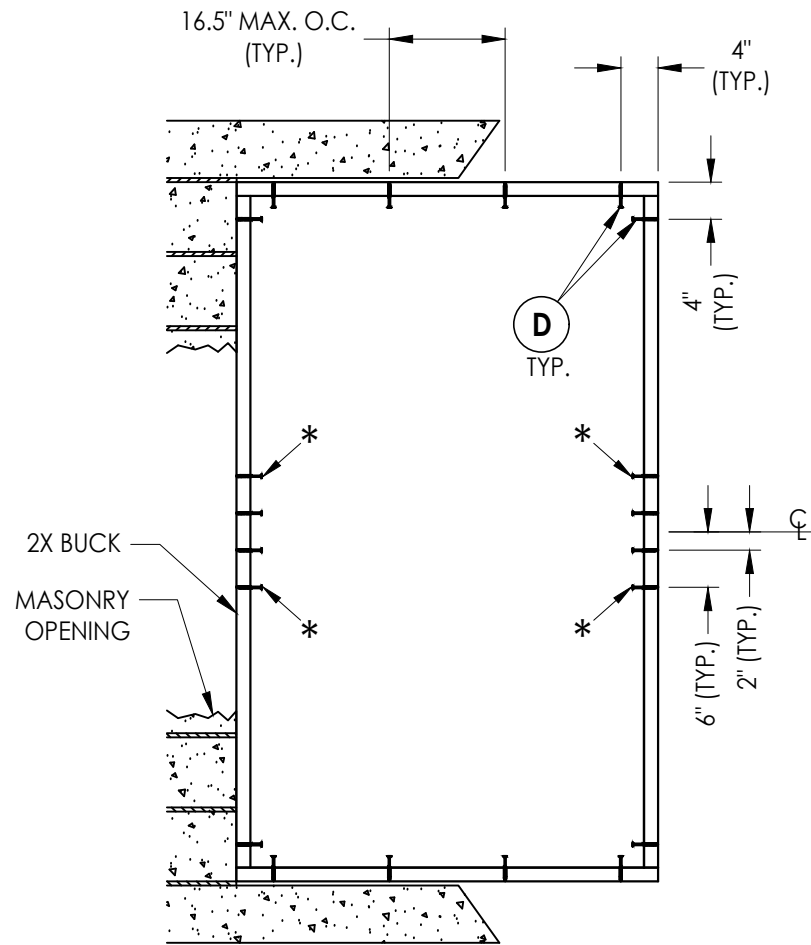
RW BUILDING CONSULTANTS, INC.
 P.O. Box 230, Vairico, FL 33595
 Phone No.: 813.659.9197
 FBPE Registry No. 9813

PRODUCT:
 5400, 5400S SERIES
 Vinyl Single Hung Window

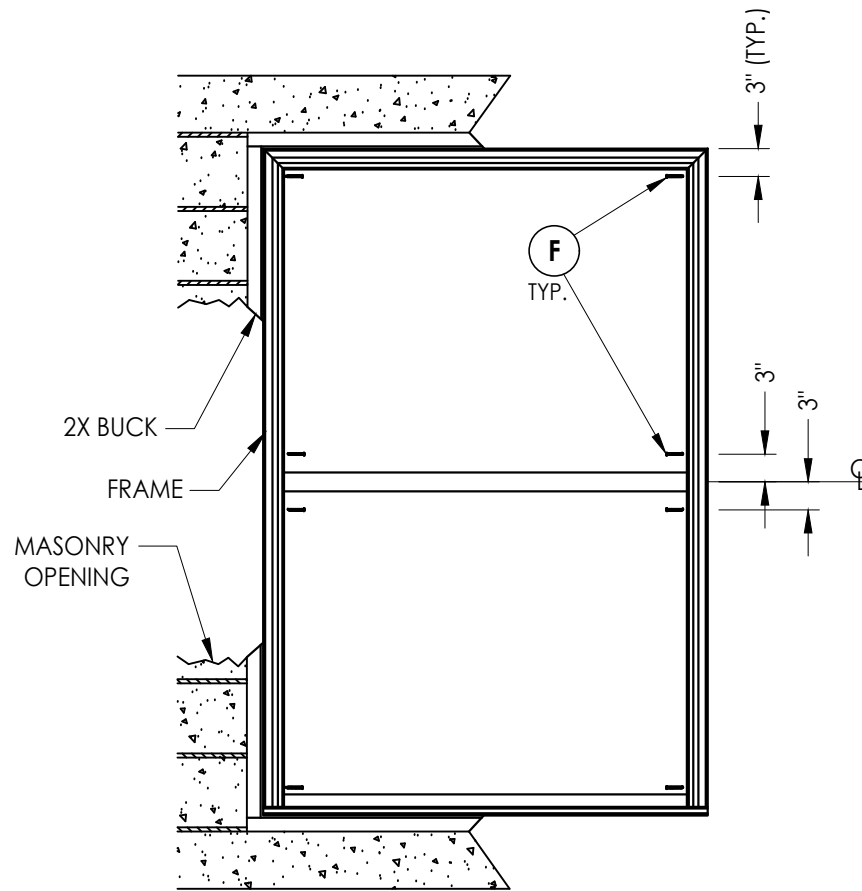
PART OR ASSEMBLY:
 VERTICAL
 CROSS SECTIONS

| NO. | DATE | REVISIONS |
|-----|---------|----------------------------------|
| 7 | 7/06/23 | UPDATE TO 8TH ED. (2023) FBC LFS |
| 6 | 7/02/20 | UPDATE TO 7TH ED. (2020) FBC LFS |
| 5 | 6/01/17 | UPDATE TO 6TH ED. (2017) FBC JK |
| 4 | 6/09/16 | REVISE INSTALLATION SCREWS LFS |

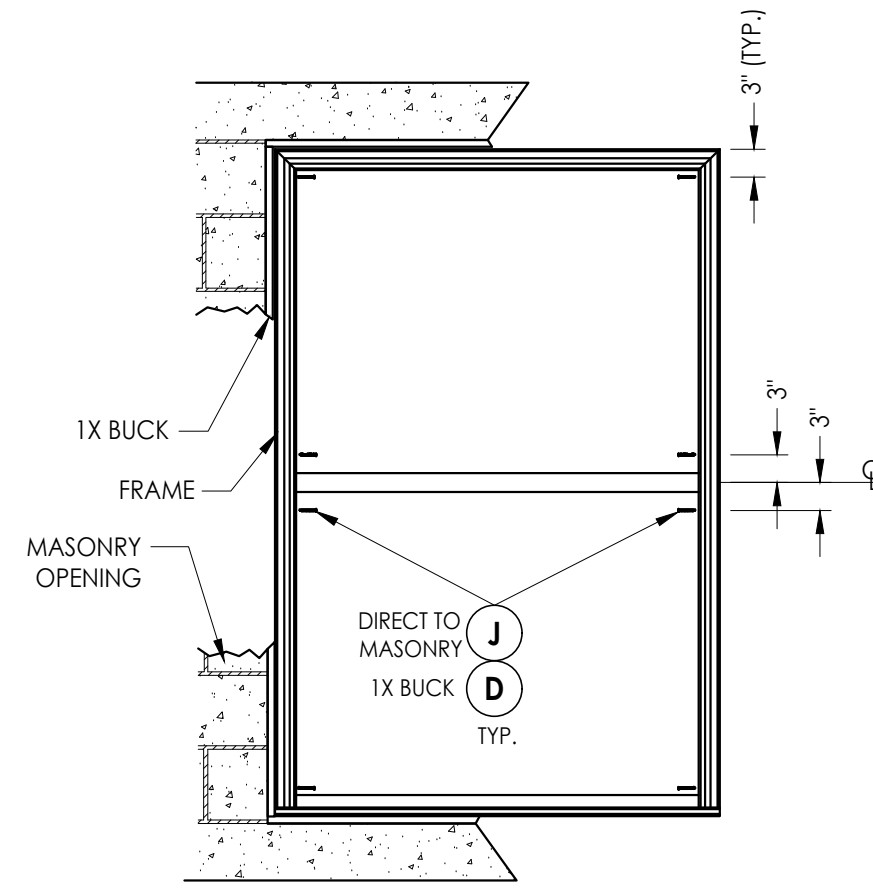
DATE: 6/22/14
 SCALE: N.T.S.
 DWG. BY: JK
 CHK. BY: LFS
 DRAWING NO.: FL-17088.2
 SHEET 3 OF 7



BUCK ANCHORING



FRAME ANCHORING
2X Buck



FRAME ANCHORING
1X Buck
Direct to masonry

* Anchors indicated are required for Design Pressure > 45 psf only.

UP TO 84" MAX. FRAME HEIGHT

CONCRETE ANCHOR NOTES:

1. Concrete anchor locations at the corners may be adjusted to maintain the min. edge distance to mortar joints.
2. Concrete anchor locations noted as "MAX. ON CENTER" must be adjusted to maintain the min. edge distance to mortar joints, additional concrete anchors may be required to ensure the "MAX. ON CENTER" dimension are not exceeded.
3. Concrete anchor table:

| ANCHOR TYPE | ANCHOR SIZE | MIN. EMBEDMENT | MIN. CLEARANCE TO MASONRY EDGE | MIN. CLEARANCE TO ADJACENT ANCHOR |
|-------------------|-------------|----------------|--------------------------------|-----------------------------------|
| ITW TAPCON® | 1/4" | 1-1/4" | 2" | 4" |
| DeWALT ULTRACON+® | 1/4" | 1-1/4" | 1" | 4" |

WOOD SCREW INSTALLATION NOTES:

1. Maintain a minimum 5/8" edge distance, 1" end distance, & 1" o.c. spacing of wood screws to prevent the splitting of wood.

Documents Prepared By:
Lyndon F. Schmidt
P.E. No. 43409

RW BUILDING CONSULTANTS, INC.
P.O. Box 230, Valrico, FL 33595
Phone No.: 813.659.9197
FBPE Registry No. 9813

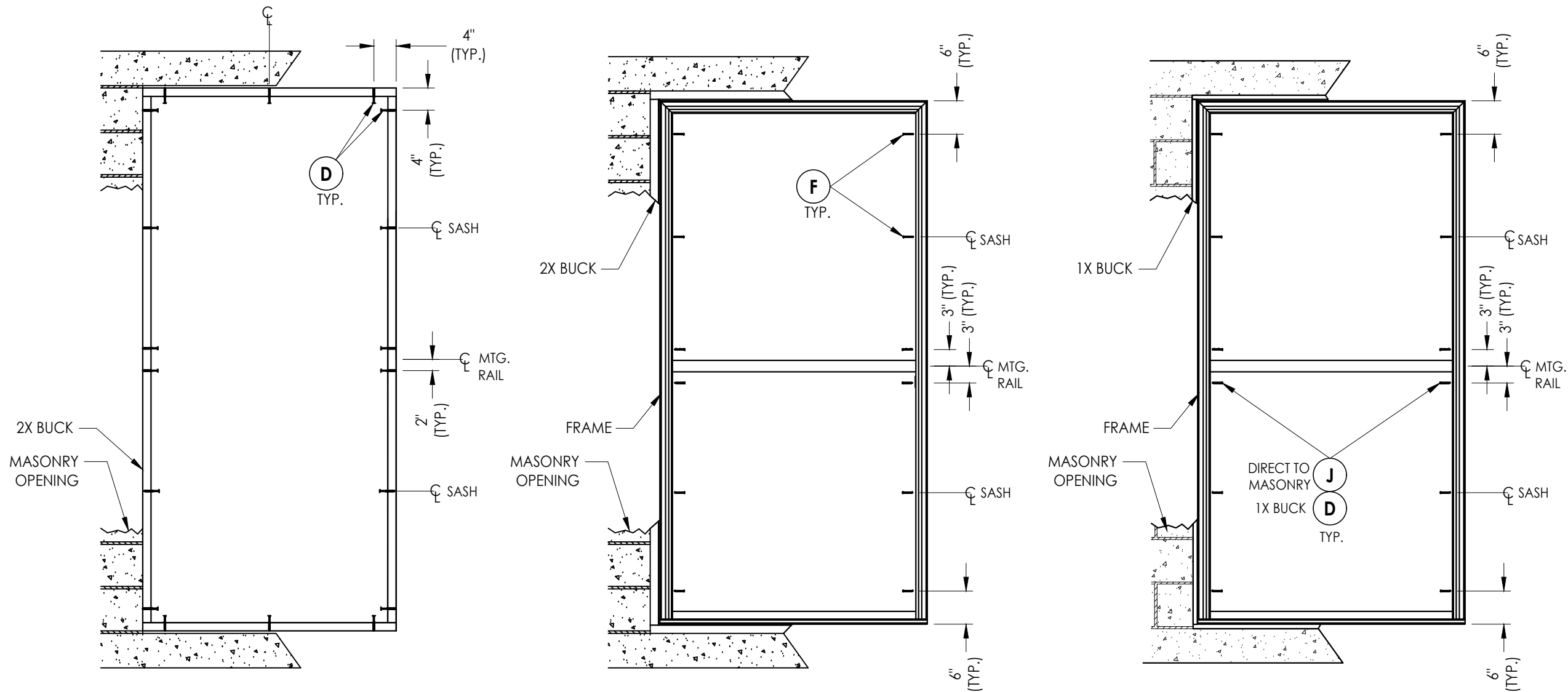
PRODUCT:
5400, 5400S SERIES
Vinyl Single Hung Window

PART OR ASSEMBLY:

BUCK AND
FRAME ANCHORING

| NO. | DATE | REVISIONS |
|-----|---------|----------------------------------|
| 7 | 7/06/23 | UPDATE TO 8TH ED. (2023) FBC LFS |
| 6 | 7/02/20 | UPDATE TO 7TH ED. (2020) FBC LFS |
| 5 | 6/01/17 | UPDATE TO 6TH ED. (2017) FBC JK |
| 4 | 6/09/16 | REVISE INSTALLATION SCREWS LFS |
| | | BY |

DATE: 6/22/14
SCALE: N.T.S.
DWG. BY: JK
CHK. BY: LFS
DRAWING NO.: FL-17088.2
SHEET 4 OF 7



BUCK ANCHORING

FRAME ANCHORING
2X Buck

FRAME ANCHORING
1X Buck
Direct to masonry

UP TO 96" MAX. FRAME HEIGHT
(EQUAL LITES)

CONCRETE ANCHOR NOTES:

- Concrete anchor locations at the corners may be adjusted to maintain the min. edge distance to mortar joints.
- Concrete anchor locations noted as "MAX. ON CENTER" must be adjusted to maintain the min. edge distance to mortar joints, additional concrete anchors may be required to ensure the "MAX. ON CENTER" dimension are not exceeded.
- Concrete anchor table:

| ANCHOR TYPE | ANCHOR SIZE | MIN. EMBEDMENT | MIN. CLEARANCE TO MASONRY EDGE | MIN. CLEARANCE TO ADJACENT ANCHOR |
|------------------|-------------|----------------|--------------------------------|-----------------------------------|
| ITW TAPCON® | 1/4" | 1-1/4" | 2" | 4" |
| DeWALT ULTRACON® | 1/4" | 1-1/4" | 1" | 4" |

WOOD SCREW INSTALLATION NOTES:

- Maintain a minimum 5/8" edge distance, 1" end distance, & 1" o.c. spacing of wood screws to prevent the splitting of wood.

Documents Prepared By:
Lyndon F. Schmidt
P.E. No. 43409

RW BUILDING CONSULTANTS, INC.
P.O. Box 230, Valrico, FL 33595
Phone No.: 813.659.9197
FBPE Registry No. 9813

PRODUCT: 5400, 5400S SERIES
Vinyl Single Hung Window

PART OR ASSEMBLY:
BUCK AND
FRAME ANCHORING

| NO. | DATE | REVISIONS |
|-----|---------|----------------------------------|
| 7 | 7/06/23 | UPDATE TO 8TH ED. (2023) FBC LFS |
| 6 | 7/02/20 | UPDATE TO 7TH ED. (2020) FBC LFS |
| 5 | 6/01/17 | UPDATE TO 6TH ED. (2017) FBC JK |
| 4 | 6/09/16 | REVISE INSTALLATION SCREWS LFS |
| | | BY |

DATE: 6/22/14

SCALE: N.T.S.

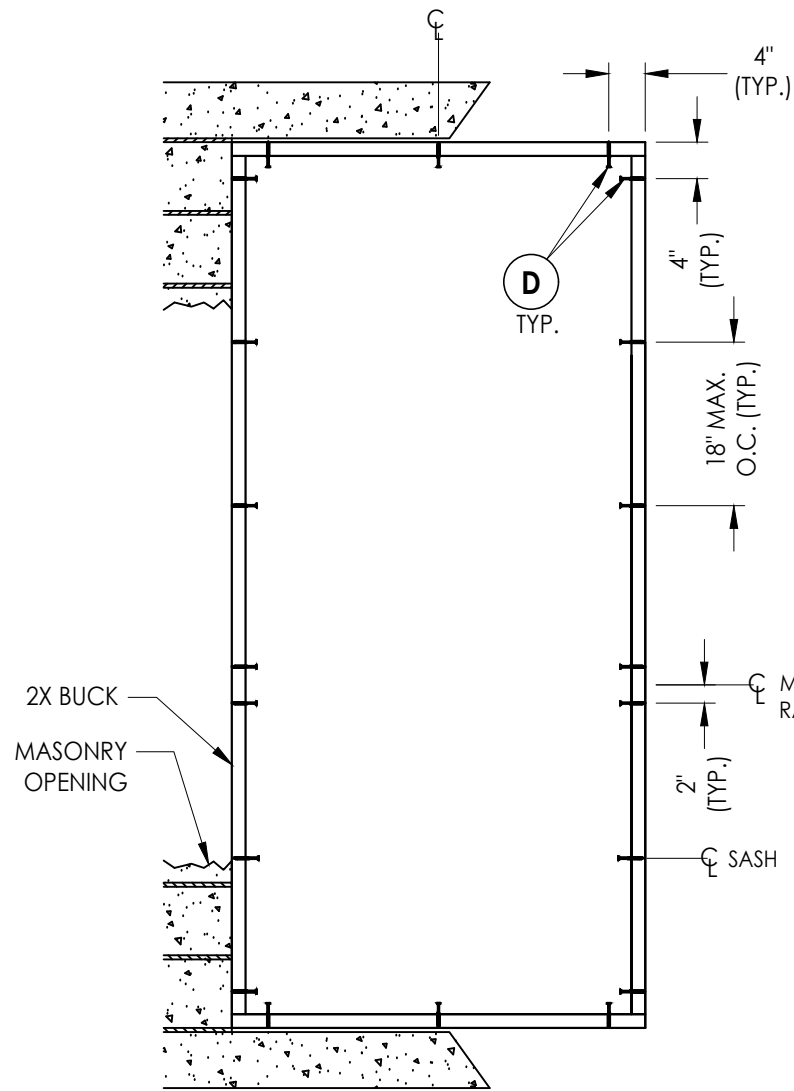
DWG. BY: JK

CHK. BY: LFS

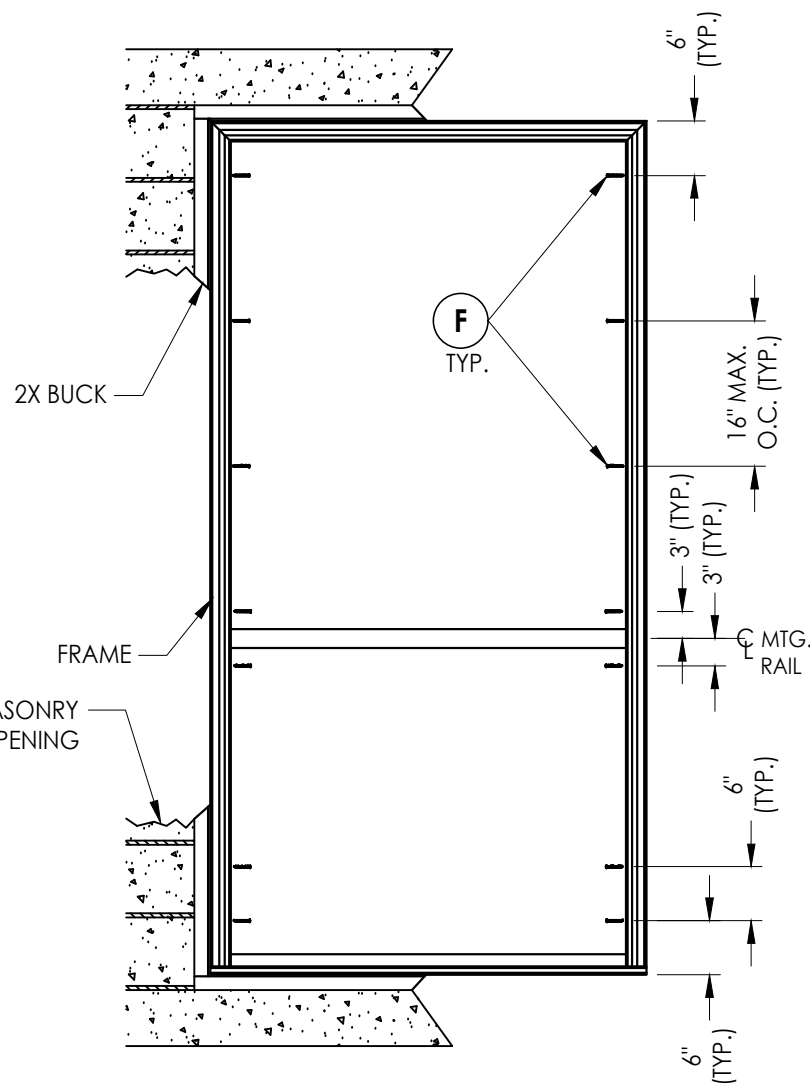
DRAWING NO.:

FL-17088.2

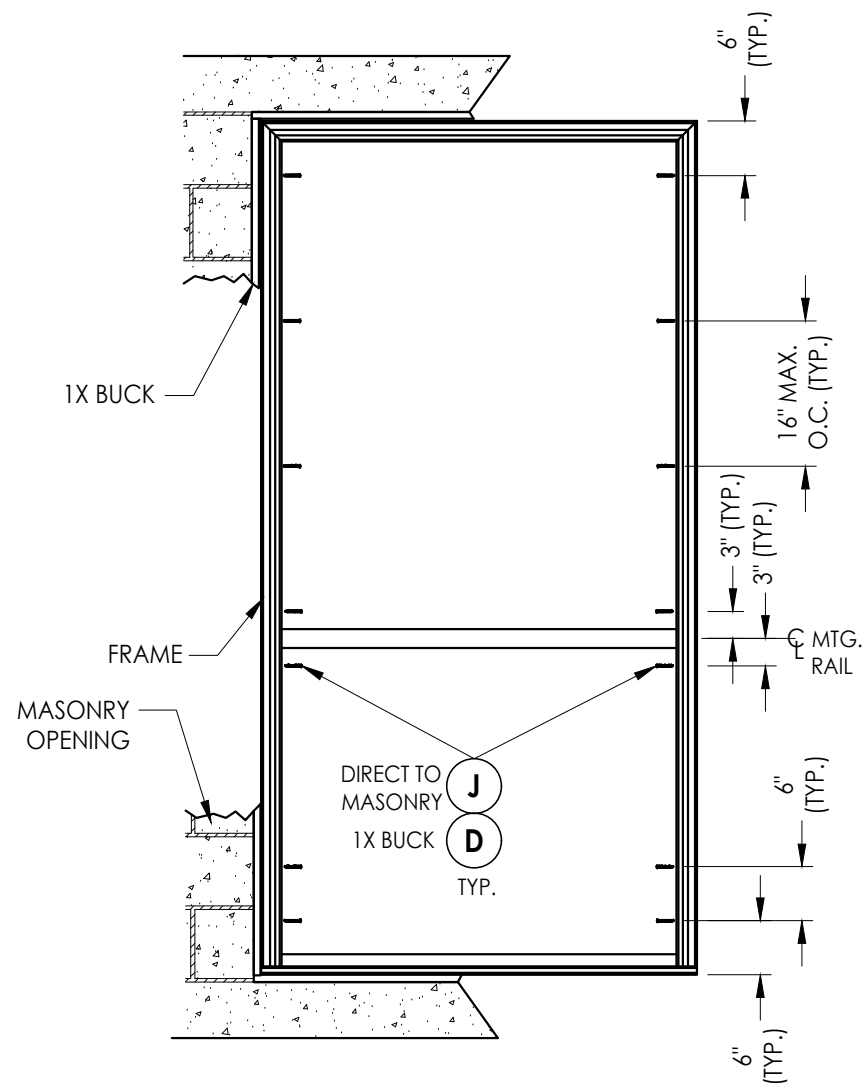
SHEET 5 OF 7



BUCK ANCHORING



FRAME ANCHORING
2X Buck



FRAME ANCHORING
1X Buck
Direct to masonry

UP TO 96" MAX. FRAME HEIGHT
(UNEQUAL LITES)

CONCRETE ANCHOR NOTES:

1. Concrete anchor locations at the corners may be adjusted to maintain the min. edge distance to mortar joints.
2. Concrete anchor locations noted as "MAX. ON CENTER" must be adjusted to maintain the min. edge distance to mortar joints, additional concrete anchors may be required to ensure the "MAX. ON CENTER" dimension are not exceeded.
3. Concrete anchor table:

| ANCHOR TYPE | ANCHOR SIZE | MIN. EMBEDMENT | MIN. CLEARANCE TO MASONRY EDGE | MIN. CLEARANCE TO ADJACENT ANCHOR |
|------------------|-------------|----------------|--------------------------------|-----------------------------------|
| ITW TAPCON® | 1/4" | 1-1/4" | 2" | 4" |
| DeWALT ULTRACON® | 1/4" | 1-1/4" | 1" | 4" |

WOOD SCREW INSTALLATION NOTES:

1. Maintain a minimum 5/8" edge distance, 1" end distance, & 1" o.c. spacing of wood screws to prevent the splitting of wood.

Documents Prepared By:
Lyndon F. Schmidt
P.E. No. 43409

RW BUILDING CONSULTANTS, INC.
P.O. Box 230, Valrico, FL 33595
Phone No.: 813.659.9197
FBPE Registry No. 9813

PRODUCT: 5400, 5400S SERIES
Vinyl Single Hung Window

PART OR ASSEMBLY:
BUCK AND
FRAME ANCHORING

| NO. | DATE | REVISIONS | BY |
|-----|---------|----------------------------|---------|
| 7 | 7/06/23 | UPDATE TO 8TH ED. (2023) | FBC LFS |
| 6 | 7/02/20 | UPDATE TO 7TH ED. (2020) | FBC LFS |
| 5 | 6/01/17 | UPDATE TO 6TH ED. (2017) | FBC JK |
| 4 | 6/09/16 | REVISE INSTALLATION SCREWS | LFS |

DATE: 6/22/14

SCALE: N.T.S.

DWG. BY: JK

CHK. BY: LFS

DRAWING NO.:

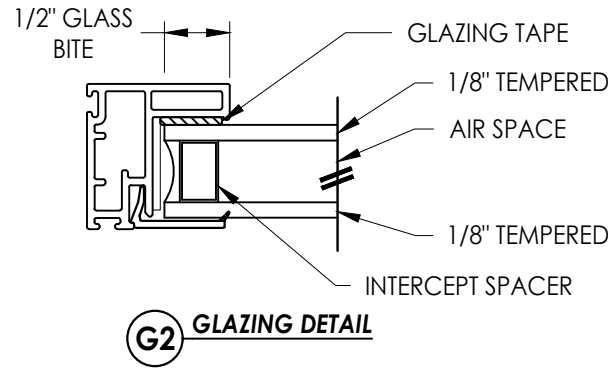
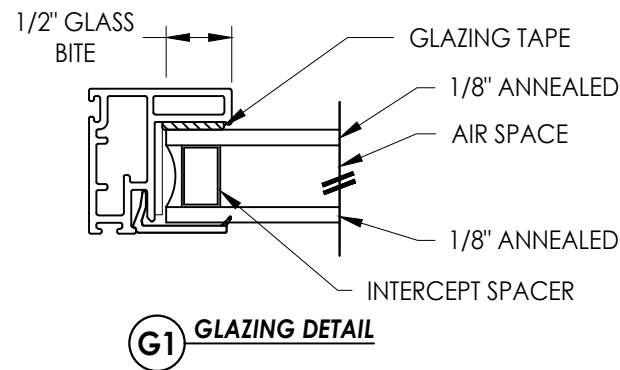
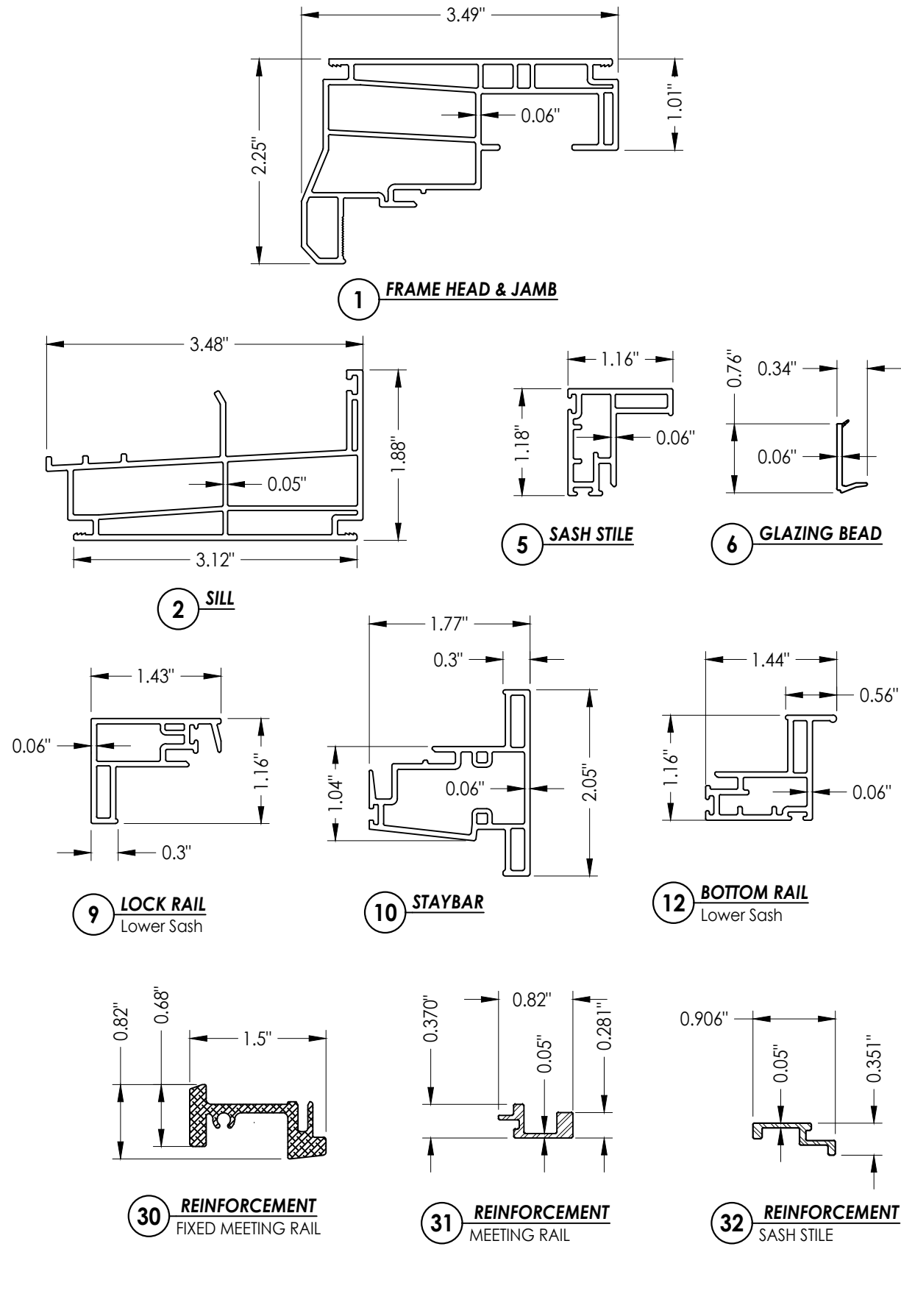
FL-17088.2

SHEET 6 OF 7

BILL OF MATERIALS

| ITEM # | DESCRIPTION | MATERIAL |
|--------|--|----------|
| A | 1X BUCK SG >= 0.42 | WOOD |
| B | 2X BUCK SG >= 0.42 | WOOD |
| C | 1/4" MAX. SHIM SPACE | - |
| D | 1/4" X 2-3/4" PFH DeWALT OR ITW CONCRETE SCREW | STEEL |
| E | MASONRY - 3,000 PSI MIN. CONCRETE CONFORMING TO ACI 301 OR HOLLOW BLOCK CONFORMING TO ASTM C90 | CONCRETE |
| F | #8 X 2" PAN HEAD/TRUSS HEAD WOOD SCREW (1-3/8" MIN. EMBEDMENT) | STEEL |
| J | 1/4" X 2-1/4" PFH DeWALT OR ITW CONCRETE SCREW | STEEL |
| 1 | FRAME HEAD AND JAMB* | PVC |
| 2 | SILL* | PVC |
| 5 | SASH STILE* | PVC |
| 6 | GLAZING BEAD* | PVC |
| 9 | LOCK RAIL LOWER SASH* | PVC |
| 10 | STAYBAR* | PVC |
| 12 | BOTTOM RAIL LOWER SASH* | PVC |
| 16 | WEATHERSTRIP ULTRA FAB .270 PILE - 270 -1875B | - |
| 17 | WEATHERSTRIP SILLBULB (AMESBURY 32690) | - |
| 20 | LOCK 8513 / 8845 LAWRENCE | PVC |
| 21 | KEEPER 2700 - 214 LAWRENCE | PVC |
| 23 | #6 X 3/4" PFH (VINYL LOCK SCREWS) | STEEL |
| 24 | SASH TILT LATCH - ASHLAND | PVC |
| 26 | #6 X 1/2" PFH (VINYL LOCK SCREWS) | STEEL |
| 30 | REINFORCEMENT (FIXED MEETING RAIL) ALUM. 6063-T6 | ALUM |
| 31 | REINFORCEMENT (MEETING RAIL) ALUM. 6063-T6 | ALUM |
| 32 | REINFORCEMENT (SASH STILES) ALUM. 6063-T6 | ALUM |

* THE APPROVED WHITE RIGID PVC EXTERIOR EXTRUSIONS FOR WINDOWS ARE TO BE PRODUCED BY EXTRUDERS LICENSEES IN "AAMA CERTIFICATION PROGRAMS FOR RIGID PVC EXTRUSIONS".



Documents Prepared By:
 Lyndon F. Schmidt
 P.E. No. 43409

RW BUILDING CONSULTANTS, INC.
 P.O. Box 230, Vairico, FL 33595
 Phone No.: 813.659.9197
 FBPE Registry No. 9813

PRODUCT: 5400, 5400S SERIES
 Vinyl Single Hung Window
 PART OR ASSEMBLY:
 BILL OF MATERIALS & GLAZING DETAILS
 COMPONENTS & GLAZING DETAILS

| NO. | DATE | BY | REVISIONS |
|-----|---------|-----|------------------------------|
| 7 | 7/06/23 | LFS | UPDATE TO 8TH ED. (2023) FBC |
| 6 | 7/02/20 | LFS | UPDATE TO 7TH ED. (2020) FBC |
| 5 | 6/01/17 | LFS | UPDATE TO 6TH ED. (2017) FBC |
| 4 | 6/09/16 | LFS | REVISE INSTALLATION SCREWS |

DATE: 6/22/14
 SCALE: N.T.S.
 DWG. BY: JK
 CHK. BY: LFS
 DRAWING NO.: FL-17088.2
 SHEET 7 OF 7